



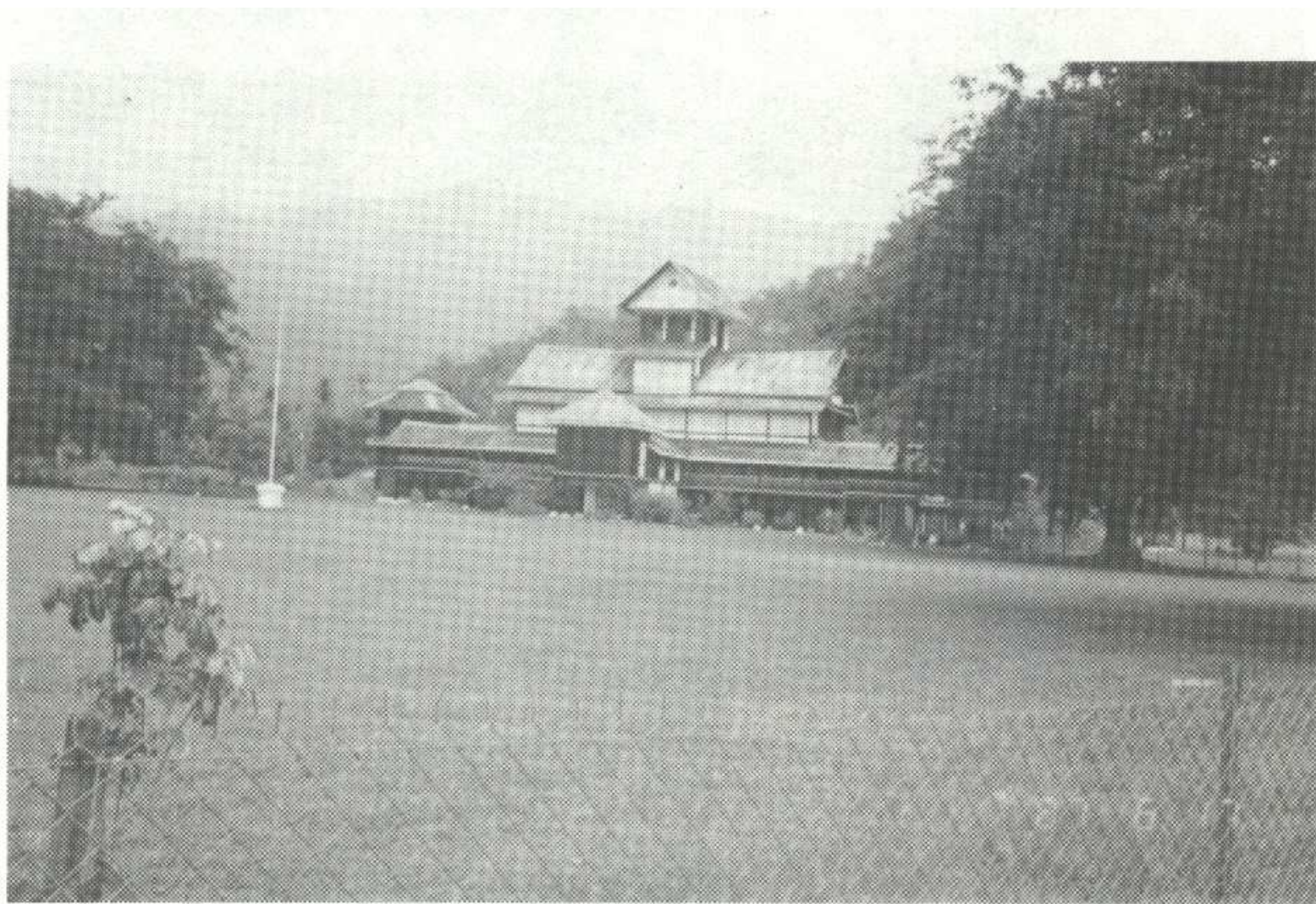
Istana lama di gambar dari rusuk.



Panca persada digunakan apabila Yamtuan ditabalkan.



Istana Besar Seri Menanti.



Istana lama Seri Menanti yang masih kukuh.

Istana Besar Seri Menanti pada zaman awalnya, siap dibina pada 1931. Istana ini menggantikan istana lama yang telah dijadikan muzium.





SERI MENANTI

Seri Menanti, the royal ancestral town of the Royalty of Negri Sembilan, is situated about 30 kilometres from Seremban, the State capital. According to one legend, the name Sri Menanti originates from the name of a river that has its source in the hills between the Rembau and Kuala Pilah districts. It falls into the Muar River after meandering for about eighteen kilometres through a fertile and isolated valley.

Another explanation was that four settlers came with their families from Minangkabau and inhabited the area around the Muar river. Each belonged to a different tribe. Their names were Paduka Besar, Engku Bongsu, Senara Muda and Sri Maharaja. As they followed the river upstream they came to a beautiful valley, where they found ripe golden padi. They settled there and called the place Sri Menanti. Sri is the Minangkabau word for “ripe padi” and Menanti means ‘awaiting’. Seri Menanti has been generally translated as the beautiful resting-place.

Seri Menanti or Senanti , is also a Javanese name for the ante-room of a palace. The Malay kings of former times added the Sanskrit honorific Sri to their titles and palaces.

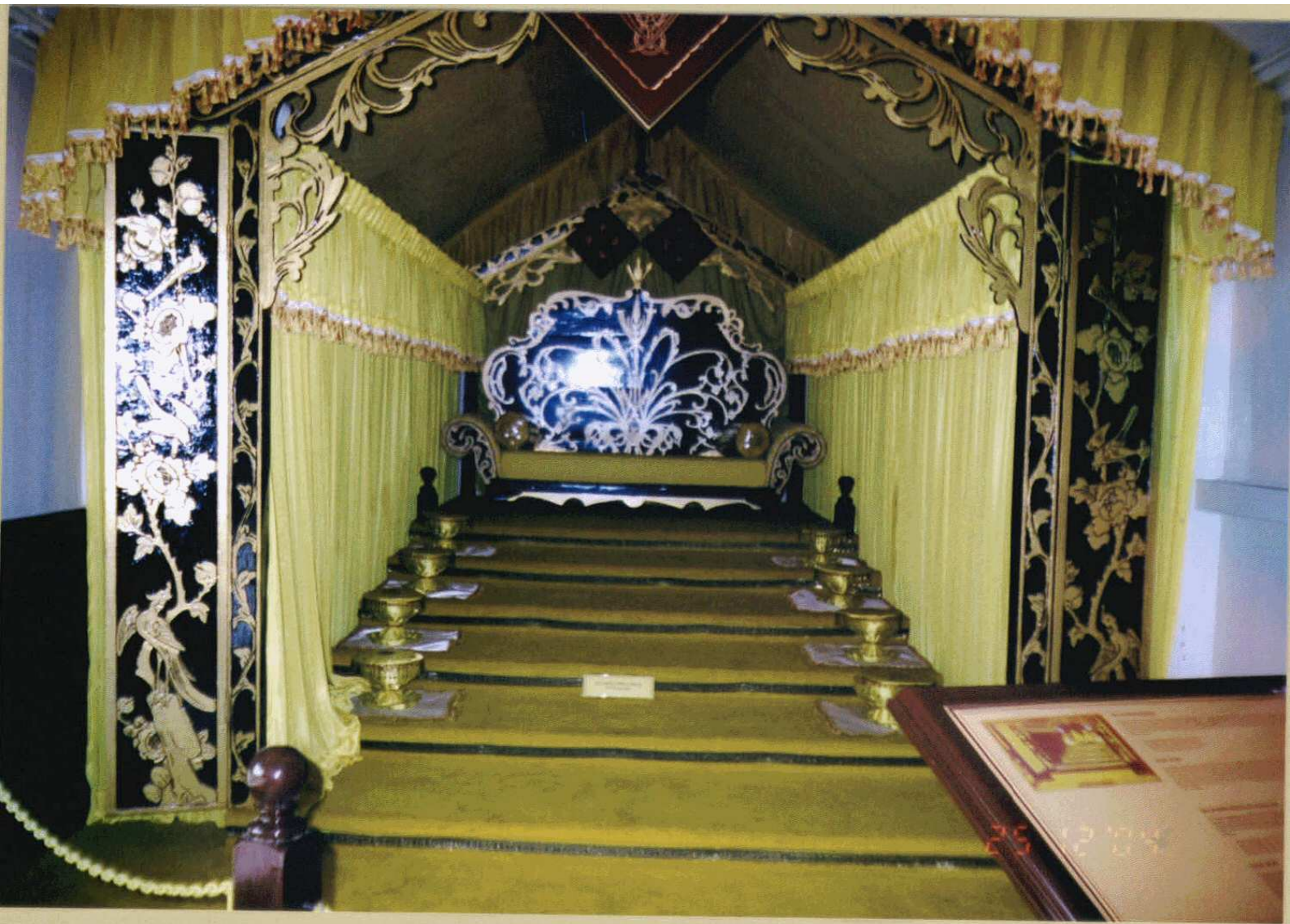




BALAI MENGHADAP



BILIK BERADU TUAN PUTERI



TEMPAT RAJA BERSEMAYAM

Istana Seri Menanti

